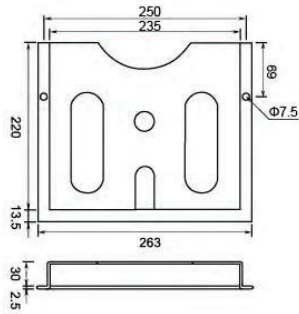


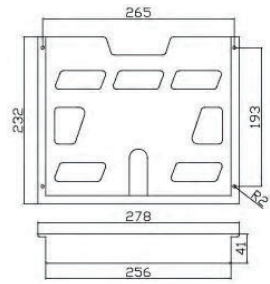
WJ-1/2/3/4 Documents Pockets



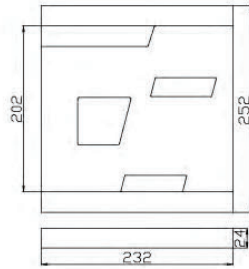
Documents Pockets WJ-1



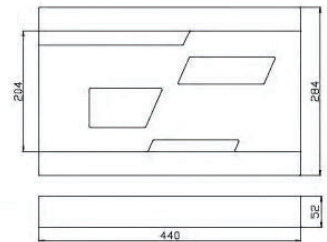
Documents Pockets WJ-2



Documents Pockets WJ-3



Documents Pockets WJ-4



Product back

WJ-1



WJ-2



WJ-3



WJ-4



Plastic documents pockets

For affixing to the inside surfaces of panel doors

Material:

Plastic ABS with self-adhesive fastening strips 3m adhesive tape

Installation :

Screw mounting or adhesive tape mounting

Colour :

Similar to RAL 7035

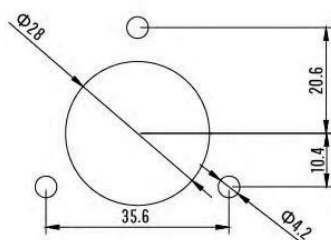
LK-705 Pressure compensator

IP54



Sealed enclosures when subject to external temperature fluctuations develop pressure differential toward the ambient. As a consequence entrance of dust and/or humidity is likely to happen through leakage points. Installing a LK-705

Prevents this risk while preserving a high protection degree for the enclosure.



Project	unit	Characters
Material	-	ABS self-extinguishing
Color	-	Grey(RAL7035),black(RAL9005)
Protection degree	-	IP54
Fixing	-	Screws with rubber gasket
Dimensions H/W/D	mm	70x50x21
Weight	kg	0.03