



Gen Next Illuminated Actuators

Actuators with PU Coated Collar & Chrome Plated Brass Collar

Colour	"Illuminated Flush Head Actuator with PU Coated Collar"	"Illuminated Projecting Head Push Function Actuator with PU Coated Collar"	"Illuminated Flush Head Actuator with Chrome Plated Brass Collar"	"Illuminated Projecting Head Push Function Actuator with Chrome Plated Brass Collar"
	EG05FD0R00	EG05PD0R00	EG07FD0R00	EG07PD0R00
	EG05FD0G00	EG05PD0G00	EG07FD0G00	EG07PD0G00
	EG05FD0B00	EG05PD0B00	EG07FD0B00	EG07PD0B00
	EG05FD0Y00	EG05PD0Y00	EG07FD0Y00	EG07PD0Y00
	EG05FD0A00	EG05PD0A00	EG07FD0A00	EG07PD0A00
	EG05FD0W00	EG05PD0W00	EG07FD0W00	EG07PD0W00

Selector Actuator with PU Coated Collar

Colour	Part No. 2 Position				Part No. 3 Position			
	Non-Spring Return 30°	Non-Spring Return 45°	Non-Spring Return 90°	Spring Return 30°	Non-Spring Return 30°	Spring Return 30°	Spring Return Left Hand	Spring Return Right Hand
	EG05SK0R00	EG05SR0R00	EG05ST0R00	EG05SI0R00	EG05SL0C00	EG05SJ0R00	EG05SM0R00	EG05SN0R00
	EG05SK0G00	EG05SR0G00	EG05ST0G00	EG05SI0G00	EG05SL0C00	EG05SJ0G00	EG05SM0G00	EG05SN0G00
	EG05SK0B00	EG05SR0B00	EG05ST0B00	EG05SI0B00	EG05SL0B00	EG05SJ0B00	EG05SM0B00	EG05SN0B00
	EG05SK0Y00	EG05SR0Y00	EG05ST0Y00	EG05SI0Y00	EG05SL0Y00	EG05SJ0Y00	EG05SM0Y00	EG05SN0Y00
	EG05SK0W00	EG05SR0W00	EG05ST0W00	EG05SI0W00	EG05SL0C00	EG05SJ0W00	EG05SM0W00	EG05SN0W00

Selector Actuator with Chrome Plated Brass Collar

Colour	Part No. 2 Position				Part No. 3 Position			
	Non-Spring Return 30°	Non-Spring Return 45°	Non-Spring Return 90°	Spring Return 30°	Non-Spring Return 30°	Spring Return 30°	Spring Return Left Hand	Spring Return Right Hand
	EG07SK0R00	EG07SR0R00	EG07ST0R00	EG07SI0R00	EG07SL0C00	EG07SJ0R00	EG07SM0R00	EG07SN0R00
	EG07SK0G00	EG07SR0G00	EG07ST0G00	EG07SI0G00	EG07SL0C00	EG07SJ0G00	EG07SM0G00	EG07SN0G00
	EG07SK0B00	EG07SR0B00	EG07ST0B00	EG07SI0B00	EG07SL0B00	EG07SJ0B00	EG07SM0B00	EG07SN0B00
	EG07SK0Y00	EG07SR0Y00	EG07ST0Y00	EG07SI0Y00	EG07SL0Y00	EG07SJ0Y00	EG07SM0Y00	EG07SN0Y00
	EG07SK0W00	EG07SR0W00	EG07ST0W00	EG07SI0W00	EG07SL0C00	EG07SJ0W00	EG07SM0W00	EG07SN0W00



Gen Next Non-Illuminated Actuators

Actuators with PU coated collar

Actuators with Chrome plated Brass Collar



Colour	"Flush Head Actuator with PU Coated collar"	"Projecting Head Push Function Actuator with PU Coated collar"	"Flush Head Actuator with chrome plated Brass collar"	"Projecting Head Push Function Actuator with chrome plated Brass collar"
	EG04FD0R00	EG04PD0R00	EG06FD0R00	EG06PD0R00
	EG04FD0G00	EG04PD0G00	EG06FD0G00	EG06PD0G00
	EG04FD0B00	EG04PD0B00	EG06FD0B00	EG06PD0B00
	EG04FD0Y00	EG04PD0Y00	EG06FD0Y00	EG06PD0Y00
	EG04FD0A00	EG04PD0A00	EG06FD0A00	EG06PD0A00
	EG04FD0W00	EG04PD0W00	EG06FD0W00	EG06PD0W00
	EG04FD0C00	EG04PD0C00	EG06FD0C00	EG06PD0C00

Selector Actuator with PU Coated Collar

Colour	Part No. 2 Position				Part No. 3 Position			
	Non-Spring Return 30°	Non-Spring Return 45°	Non-Spring Return 90°	Spring Return 30°	Non-Spring Return 30°	Spring Return 30°	Spring Return Left Hand	Spring Return Right Hand
	EG04SK0C00	EG04SR0C00	EG04ST0C00	EG04SI0C00	EG04SL0C00	EG04SJ0C00	EG04SM0C00	EG04SN0C00
	EG04SK0R00	EG04SR0R00	EG04ST0R00	EG04SI0R00	EG04SL0C00	EG04SJ0R00	EG04SM0R00	EG04SN0R00
	EG04SK0G00	EG04SR0G00	EG04ST0G00	EG04SI0G00	EG04SL0C00	EG04SJ0G00	EG04SM0G00	EG04SN0G00
	EG04SK0W00	EG04SR0W00	EG04ST0W00	EG04SI0W00	EG04SL0C00	EG04SJ0W00	EG04SM0W00	EG04SN0W00



Selector Actuator with Chrome plated Brass Collar

Colour	Selector Actuator 2 Position				Selector Actuator 3 Position			
	Non-Spring Return 30°	Non-Spring Return 45°	Non-Spring Return 90°	Spring Return 30°	Non-Spring Return 30°	Spring Return 30°	Spring Return Left Hand	Spring Return Right Hand
●	EG06SK0C00	EG06SR0C00	EG06ST0C00	EG06SI0C00	EG06SL0C00	EG06SJ0C00	EG06SM0C00	EG06SN0C00
●	EG06SK0R00	EG06SR0R00	EG06ST0R00	EG06SI0R00	EG06SL0C00	EG06SJ0R00	EG06SM0R00	EG06SN0R00
●	EG06SK0G00	EG06SR0G00	EG06ST0G00	EG06SI0G00	EG06SL0C00	EG06SJ0G00	EG06SM0G00	EG06SN0G00
●	EG06SK0W00	EG06SR0W00	EG06ST0W00	EG06SI0W00	EG06SL0C00	EG06SJ0W00	EG06SM0W00	EG06SN0W00

Lever Head Actuator with PU Coated Collar

Colour	Part No. 2 Position				Part No. 3 Position			
	Non-Spring Return 30°	Non-Spring Return 45°	Non-Spring Return 90°	Spring Return 30°	Non-Spring Return 30°	Spring Return 30°	Spring Return Left Hand	Spring Return Right Hand
●	EG04LK0C00	EG04LR0C00	EG04LT0C00	EG04LI0C00	EG04LL0C00	EG04LJ0C00	EG04LM0C00	EG04LN0C00

Lever Head Actuator with Chrome plated Brass Collar

Colour	Part No. 2 Position				Part No. 3 Position			
	Non-Spring Return 30°	Non-Spring Return 45°	Non-Spring Return 90°	Spring Return 30°	Non-Spring Return 30°	Spring Return 30°	Spring Return Left Hand	Spring Return Right Hand
●	EG06LK0C00	EG06LR0C00	EG06LT0C00	EG06LI0C00	EG06LL0C00	EG06LJ0C00	EG06LM0C00	EG06LN0C00



Lock & Key Actuator with PU Coated Collar

Colour	Part No. 2 Position				Part No. 3 Position			
	Non-Spring Return 30°	Non-Spring Return 45°	Non-Spring Return 90°	Spring Return 30°	Non-Spring Return 30°	Spring Return 30°	Spring Return Left Hand	Spring Return Right Hand
●	EG04KK0C01	EG04KR0C01	EG04KT0C01	EG04KI0C01	EG04KL0C01	EG04KJ0C01	EG04KM0C01	EG04KN0C01

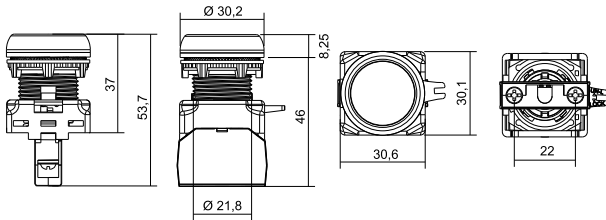
Lock & Key Actuator with Chrome plated Brass Collar

Colour	Part No. 2 Position				Part No. 3 Position			
	Non-Spring Return 30°	Non-Spring Return 45°	Non-Spring Return 90°	Spring Return 30°	Non-Spring Return 30°	Spring Return 30°	Spring Return Left Hand	Spring Return Right Hand
●	EG06KK0C01	EG06KR0C01	EG06KT0C01	EG06KI0C01	EG06KL0C01	EG06KJ0C01	EG06KM0C01	EG06KN0C01

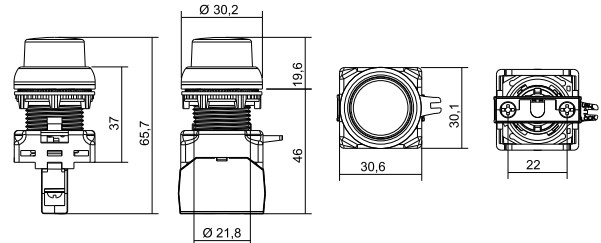


Gen Next Modular Push Button-Illuminated

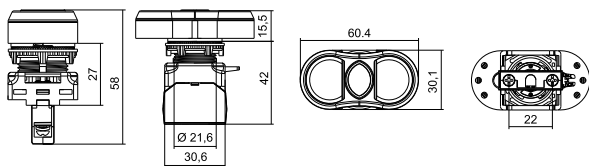
Flush Head Actuator



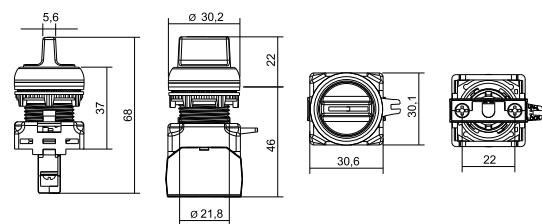
Projecting Head Push Function Actuator



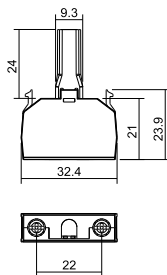
Twin-Touch Actuator



Selector Actuator



LED Holder

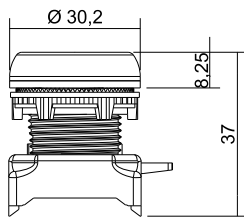


Test Parameters	Specification
Product	Gen Next LED Actuators
Rated Voltage	12 V AC/DC, 24 V AC/DC, 30 V AC/DC, 48 V AC/DC, 64 V AC/DC, 110 V AC, 110 V DC, 240 V AC, 220V DC
Operating Voltage	-20% to +10% of rated voltage
Type of LED	Side View SMD LED's
Available Colours	Red / Green / Yellow / Amber / Blue / White
Life / Warranty	0.1 Million burning hours/24 Months**
Operating Frequency	50 / 60 Hz
Operating Temperature	-25°C to 65°C
Storage Temperature	-30°C to 70°C
Wire Termination Capacity	0.5 mm ² , 1.5 - 2.5 mm ²
Terminal Torque	0.8 Nm
LVGP	Available
Surge Test	2KV
HV test for 60 sec.	1.5KV
Degree of Protection	Above Panel: IP65 For Terminals: IP20
International Approvals	CE, UL

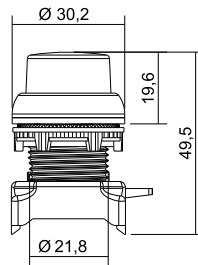
**To be used only with Gen Next Contact Blocks & Gen Next LED holder.

Gen Next Modular Push Button- Non-Illuminated

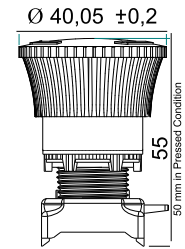
Flush Head Actuator



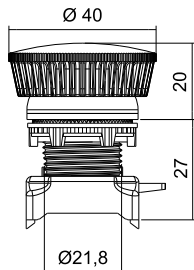
Projecting Head Push Function Actuator



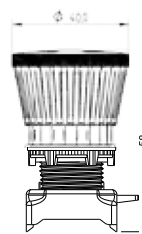
Gen Next Pro Push Turn



Mushroom Head Push - Function Actuator



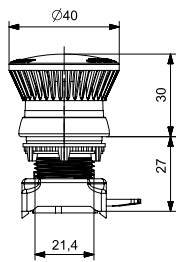
Mushroom Head Push - Turn with Indication



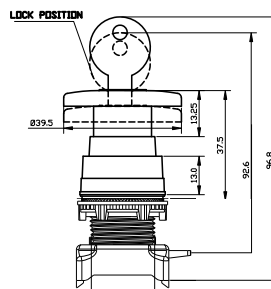
Mushroom Head Push - Pull with Indication



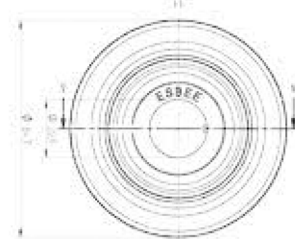
Mushroom Head Push - Pull Actuator



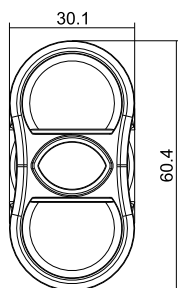
Mushroom Head Lock & Key Actuator



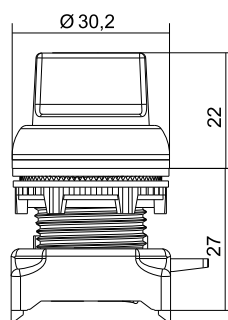
Illuminated Legend Plate



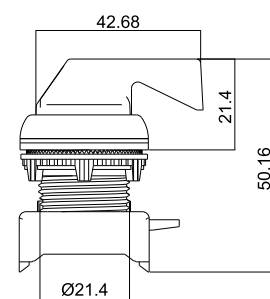
Twin-Touch Actuator



Selector Actuator

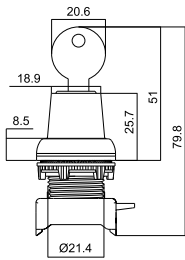


Lever Head Actuator

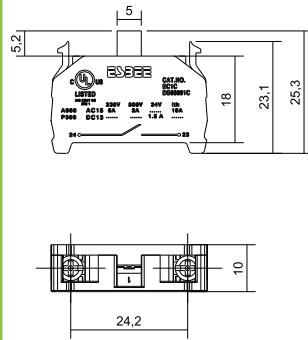




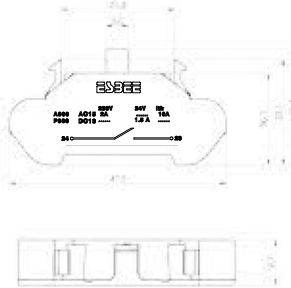
Lock & Key Rotary Actuator



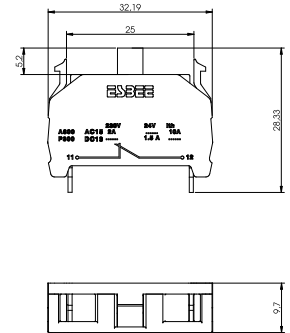
Gen Next Contact Blocks



Cage Clamp Contact Blocks



PCB Mounted Contact Blocks



Test Parameters	Specification			
Supply	IEC - 60947-5-1	UL-508	ITH/Thermal Current	
Utilization Category	AC	AC-15	A600	10A
	DC	DC-13	P300	
Contact	NO and NC			
Rated Voltage	230V AC	120V AC	24V DC	
Rated Current	6A	6A	1.5A	
Frequency	50 - 60 Hz			
Electrical Life for Contact / Warranty	1 Million cycle/24 Months**			
HV Test for 60 Sec.	2.5KV (All Terminals Shorted Together)			
Rated Insulation Voltage	600 VAC			
Terminals	Suitable for flexible or solid conductors from 2x1 mm ² to 2x2.5 mm ²			
Current Carrying Material	Brass			
Contact Type	Make & Break			
Contact Material	AgNi			
Insulation Resistance at 500 VDC	50 mΩ			
Operating Torque	0.8 Nm			
Contact Resistance	20 mΩ			
mV drop at 16 A DC	200 mV			
Type	Non Illuminated / Illuminated			
Function	Push, Push - Push, Push turn, Selector			
Colour	Red / Green / Black / Yellow / White / Blue / Orange			
Disposition of Contact	<div style="display: flex; align-items: center;"> <div style="margin-right: 10px;"> <input type="checkbox"/> Contact Open <input checked="" type="checkbox"/> Contact Close </div> <div style="margin-right: 10px;"> NC NO </div> <div style="margin-right: 10px;"> </div> </div>			
International Approvals	CE, UL			

**To be used only with Gen Next Contact Blocks & Gen Next LED holder